

COLEMAN'S PTY LTD EQUIPMENT



*Exclusive partners with
Curry Supply Company to provide
the full range of products throughout Australia,
New Zealand, and the South Pacific.*

COLEMAN'S EQUIPMENT HEAD OFFICE:

31 Colliers Avenue Orange NSW 2800
Australia

+61 2 6362 1101
office@colemansequipment.com.au
colemansequipment.com.au

SALES & SUPPORT:

Mark Coleman – Managing Director
+61 (0)438 636 312
mark@colemansequipment.com.au

Jeremy Frew – General Manager
+61 (0) 427 041 452
jeremy@colemansequipment.com.au



ARTICULATED WATER TRUCKS

KEY SPECIFICATIONS:

9,500 litres (2,500 gallon) – 37,800 litres (10,000+ gallon) tanks available to suit most articulated trucks

INCLUDING:

- Caterpillar® 725 – 745 articulated trucks
- Volvo® A25 – A40 articulated trucks; A45 and working on A60
- Komatsu® HM300 – HM400 articulated trucks
- Bell Trucks America B25 – B40 articulated trucks; B45 and working on B60
- Terex TA300 – TA400
- Hydrema 912 series

ARTICULATED WATER TANKS FEATURE:

- 100% Australian/US built for Australian conditions
- Constructed of high standard ASTM-A 1/4" – 1.2" steel
- Interior protective coating for optimum protection
- Extensive tank baffling – creating stability without losing capacity
- Under body stone chip protection coating
- Low profile/low centre of gravity
- Berkeley style 4 X 3 hydraulic water pump
- In cab control unit operates:
 - Pump
 - 2 or 3 x rear sprays
 - 2 x top mounted batter sprays
 - Elkhart Brass Nitro water canon - including spray pattern and adjustable nozzle
- VFD gravity drop at rear of tank
- Bulkhead mounted ladder
- Manual rewind hose reel
- In cab operator's instruction decals
- Operations & parts manual
- Centre of gravity report

OPTIONAL EXTRAS INCLUDE:

- Water level sensor with in cab display
- Relocation of fill point
- Fill funnel
- Additional camera systems
- Mine specifications & safety systems
- Fire suppression
- Electronic spray control system
- Front sprays
- Self-loading
- Work and strobe lights

Coleman's Equipment and Curry Supply undertake ongoing development to continuously improve the design and functionality to suit the Australian, New Zealand, and South Pacific markets.





RIGID WATER TRUCKS

KEY SPECIFICATIONS:

Rigid 30,200 litre (8,000 gallon) and larger tanks available to suit most rigid off-road trucks

INCLUDING:

- Caterpillar® 770 – 777 trucks
- Komatsu® HD405 & up - HD385 takes 8,000 gallon tank

RIGID WATER TANKS FEATURE:

- Hoist raise tank for easier access/truck maintenance
- 100% Australian/US built for Australian conditions
- Constructed of high standard ASTM-A 1/4" – 1.2" steel
- Interior protective coating for optimum protection
- Bulkhead mounted ladder and internal stairwell for easy operator access
- Extensive grid lock tank baffling – creating stability without losing capacity
- Under body stone chip protection coating
- Low profile/low centre of gravity
- Berkeley style 4 X 3 hydraulic water pump
- In cab control unit operates:
 - Pump
 - 3 or 4 x rear mounted independently operated sprays
 - Elkhart Brass Nitro water canon - including spray pattern and adjustable nozzle
 - VFD gravity drop at rear of tank
- Manual rewind hose reel
- In cab operator's instruction decals
- Operations and parts manual
- Centre of gravity report

OPTIONAL EXTRAS INCLUDE:

- Water level sensor with in cab display
- Auto grease system
- Relocation of fill point
- Fill funnel
- Additional camera systems
- Mine specifications and safety systems
- Fire suppression
- Electronic spray control system
- Front sprays
- Self-loading
- Work and strobe lights





ARTICULATED & RIGID **FUEL LUBE TRUCKS**

ARTICULATED & RIGID FUEL LUBE TRUCKS FEATURE:

- Diesel
- Grease (heated)
- Water/antifreeze
- Used oil
- DEF
- Diesel and product tank sizes available to meet customer requirements and chassis capacity
- Fast-fill 1-1/2" bottom load in driver side fender area
- Filtering system located in driver side compartment
- Electric level indicator with in-cab display
- Internal valve with emergency shut-off front and rear
- Enclosed switch panel in rear compartment with remote start
- Fuel/Lube body, steel construction, split reel cabinet with rear access steps, underbody boxes
- Ability to be custom built to site and business requirements.
- Rear walk up designed for ease of access and operator safety



COLEMAN'S PTY
EQUIPMENT LTD



AFTER SALES PARTS & SERVICE

CALL COLEMAN'S EQUIPMENT HEAD OFFICE FOR PARTS SUPPORT:

Phone: +61 2 6362 1101

Email: parts@colemansequipment.com.au

Coleman's Equipment has had a long relationship with Curry Supply and has assisted in the development of water tanks for the Australian, New Zealand, and South Pacific Markets. With over 100 water tanks currently in operation in the civil construction, mining, and quarry industries, Curry Supply and Coleman's Equipment continue working together to better serve and provide for their valued customers in the Oceania market.

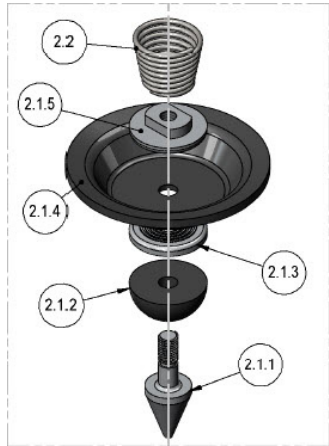
The combined experience of Curry Supply and Coleman's Equipment with a deep understanding of the heavy equipment market makes us one of the leading articulated & rigid off-road water tank suppliers. The Coleman's Equipment parts team can assist with a full range of in stock Curry Supply parts.

OPTIONAL EXTRAS:

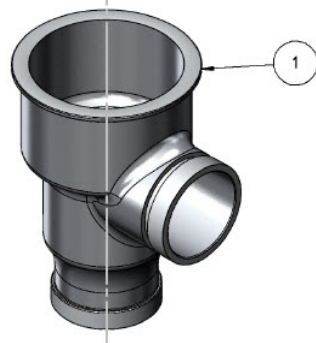
Coleman's Equipment has large workshop facilities in both Orange & Wollongong, NSW, which enables a wide range of specifications to be completed on all equipment, including:

- Full MDG 15 mine specification to trucks, tanks, and other available equipment
- Water level monitors, displays, and auto shut off
- Work lights and other electrical works

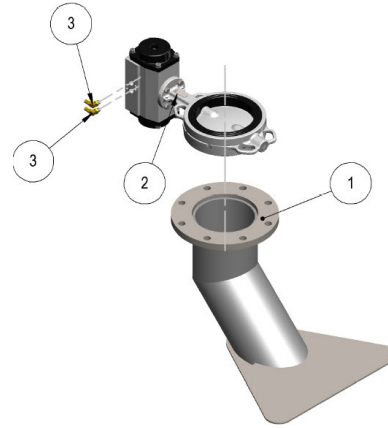
CONSUMABLES AND COMMONLY REPLACED PARTS:



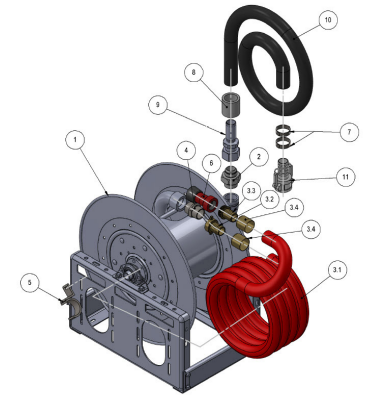
**Diaphragms/Springs
(9030KIT)**



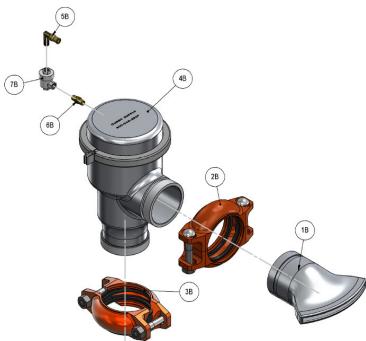
**Housings
(9030HOU)**



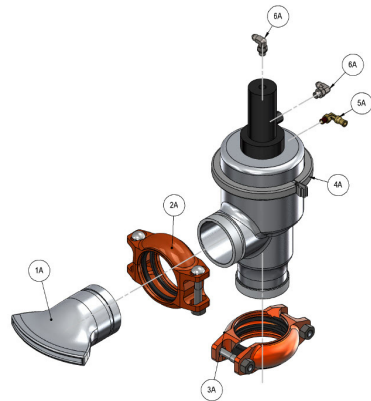
**Valve, Electric Actuated, 6",
Butterfly (BONOMI-6)**



**Hose Reel Assemble
(7520-25-26-LT...)**



Spray Valves (Air)



Spray Valves (Hydraulic)

**Pumps
(B3JRMBS 4x3)**



**Water Canon
(Nitro HD - 00008102)**

ABOUT US

Coleman's Equipment is one of Australia's leading quality used equipment dealers, supporting the civil construction, mining, quarrying and agricultural industries. Established for more than 15 years, the business has experienced consistent growth and success due to its extreme levels of customer service and long-term customer and supplier relationships. Sourcing equipment, both internationally and domestically through various sources and relationships enables the business to deliver results for customers.

Managing Director, Mark Coleman, and his team are passionate about customer service, delivery, accuracy, quality, and agility. Mark has assembled a strong and reliable team, along with continued and deep relationships with key suppliers, enabling the business to maintain the high standards it sets for itself.



The exclusive partnership with Curry Supply Company allows Coleman's Equipment to provide the best quality water tanks for off highway articulated and rigid trucks as well as fuel and lube trucks, and service trucks.

Curry Supply is a family-owned company founded in 1932 and has grown to be one of America's largest manufacturers of commercial service vehicles. Curry Supply is always on the move, growing and expanding their business across the United States, while simultaneously equipping Coleman's Equipment with off-road water trucks and fuel lube units.

Curry Supply units are highly regarded in the industry for their exceptional standards of design, workmanship, and quality components included in every piece of equipment built. Equipment handcrafted by Curry Supply in the United States is exclusively distributed by Coleman's Equipment to serve Australia, New Zealand, and the South Pacific.

COLEMAN'S PTY
EQUIPMENT LTD

